

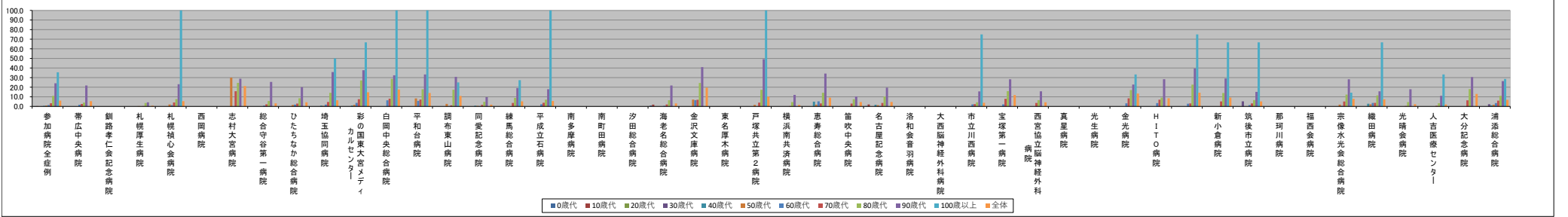
■介護施設・福祉施設等への退院率(年代別)【第4四半期】

※(ハイファン)表記は、2020/06/23時点データ未提出の病院です。

Table with 30 columns (hospital names) and 13 rows (age groups: 0歳代 to 全体). Each cell contains a percentage value representing the discharge rate for that hospital and age group.

Table with 30 columns (hospital names) and 13 rows (age groups: 0歳代 to 全体). Each cell contains a numerical value representing the number of discharges for that hospital and age group.

年代別他施設等への退院率(%)



年代別症例数(人)

