

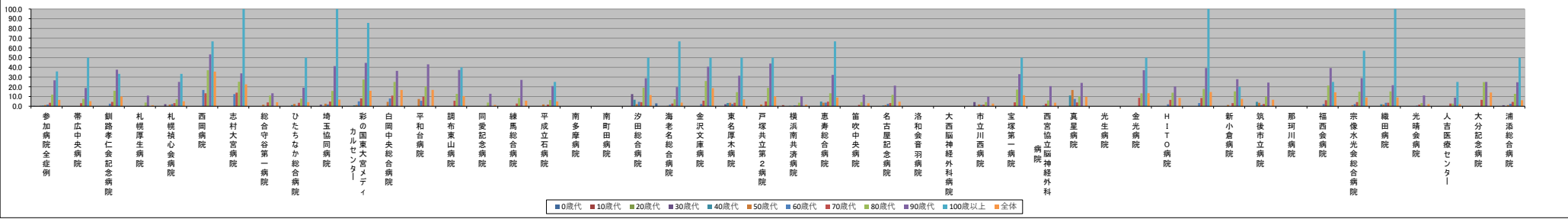
■介護施設・福祉施設等への退院率(年代別)【第3四半期】

※(ハイファン)表記は、2020/06/23時点でデータ未提出の病院です。

Table with columns for hospital names and rows for age groups (0歳代 to 100歳以上) and a total row. The table shows the percentage of discharges to nursing/welfare facilities for each age group at each hospital.

Table with columns for hospital names and rows for age groups (0歳代 to 100歳以上) and a total row. The table shows the absolute number of discharges to nursing/welfare facilities for each age group at each hospital.

年代別他施設等への退院率(%)



年代別症例数(人)

