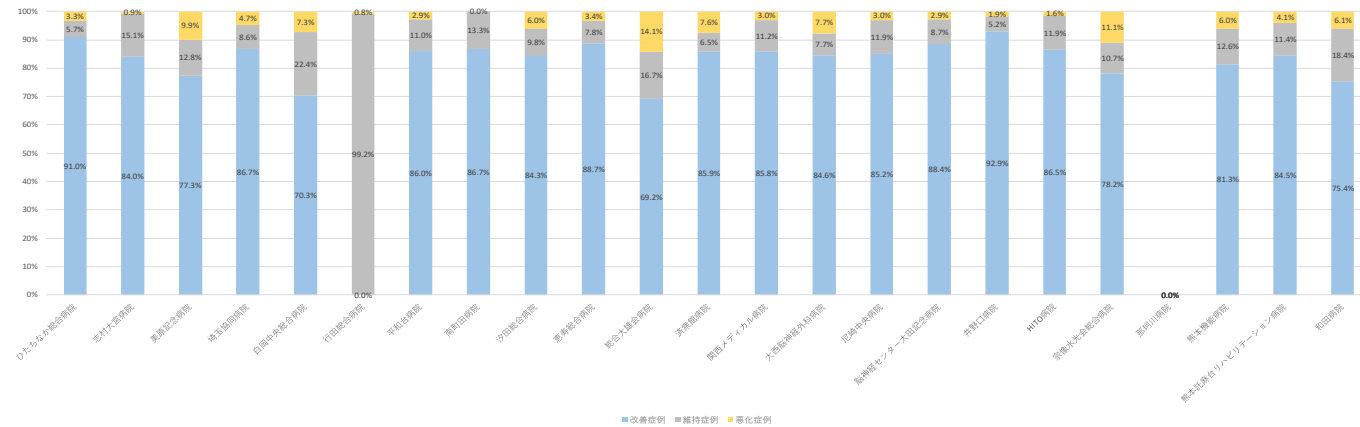


■ ADLスコアの改善率(回復リハ)

No	病院名	病床数	2020年度			2020年4月			2020年5月			2020年6月			2020年7月			2020年8月			2020年9月			2020年10月			2020年11月			2020年12月			2021年1月			2021年2月			2021年3月			
			改善症例	維持症例	悪化症例	改善症例	維持症例	悪化症例	改善症例	維持症例	悪化症例	改善症例	維持症例	悪化症例	改善症例	維持症例	悪化症例	改善症例	維持症例	悪化症例	改善症例	維持症例	悪化症例	改善症例	維持症例	悪化症例	改善症例	維持症例	悪化症例	改善症例	維持症例	悪化症例	改善症例	維持症例	悪化症例	改善症例	維持症例	悪化症例				
1	ひたちなか総合病院	50	91.0%	5.7%	3.3%	92.0%	4.0%	4.0%	100.0%	0.0%	0.0%	95.2%	4.8%	0.0%	85.0%	5.0%	10.0%	80.0%	6.7%	13.3%	95.7%	4.3%	0.0%	100.0%	0.0%	0.0%	86.4%	13.6%	0.0%	73.3%	13.3%	13.3%	95.0%	0.0%	5.0%	91.7%	8.3%	0.0%	91.3%	8.7%	0.0%	
2	豊村大塚病院	50	84.0%	15.1%	0.9%	50.0%	45.0%	5.0%	88.0%	12.0%	0.0%	73.9%	26.1%	0.0%	91.3%	8.7%	0.0%	92.3%	7.7%	0.0%	88.0%	12.0%	0.0%	84.0%	12.0%	4.0%	84.0%	16.0%	0.0%	96.3%	3.7%	0.0%	-	-	-	-	-	-	-	-		
3	福岡記念病院	83	77.3%	12.8%	9.9%	79.3%	6.9%	13.8%	77.4%	19.4%	3.2%	67.9%	21.4%	10.7%	84.2%	10.5%	5.3%	71.8%	7.7%	20.5%	80.6%	13.9%	5.8%	79.4%	11.8%	8.8%	80.0%	6.7%	13.3%	87.5%	3.1%	9.4%	72.2%	16.7%	11.1%	69.2%	20.5%	10.3%	79.1%	14.0%	7.0%	
4	埼玉国際病院	50	86.7%	8.6%	4.7%	81.8%	9.1%	9.1%	91.3%	4.3%	4.3%	72.7%	13.6%	13.6%	83.3%	12.5%	4.2%	91.7%	8.3%	0.0%	89.5%	5.3%	5.3%	80.0%	15.0%	5.0%	95.7%	4.3%	0.0%	92.3%	3.8%	3.8%	92.9%	0.0%	7.1%	92.3%	7.7%	0.0%	80.0%	16.0%	4.0%	
5	白田中央総合病院	41	70.3%	22.4%	7.3%	82.4%	17.6%	0.0%	92.9%	7.1%	0.0%	84.6%	7.7%	7.7%	72.7%	27.3%	0.0%	64.7%	11.8%	23.5%	66.7%	33.3%	0.0%	80.0%	20.0%	0.0%	65.0%	25.0%	10.0%	50.0%	44.4%	5.6%	57.1%	28.6%	14.3%	76.9%	15.4%	7.7%	63.2%	21.1%	15.8%	
6	日南総合病院	89	0.0%	99.2%	0.8%	0.0%	100.0%	0.0%	0.0%	97.3%	2.7%	0.0%	100.0%	0.0%	0.0%	100.0%	0.0%	0.0%	97.1%	2.9%	0.0%	100.0%	0.0%	0.0%	100.0%	0.0%	0.0%	100.0%	0.0%	0.0%	100.0%	0.0%	0.0%	100.0%	0.0%	0.0%	100.0%	0.0%	0.0%	100.0%	0.0%	0.0%
7	平沼総合病院	40	86.0%	11.0%	2.9%	75.0%	18.8%	6.3%	88.9%	11.1%	0.0%	90.0%	10.0%	0.0%	77.8%	22.2%	0.0%	83.3%	0.0%	16.7%	100.0%	0.0%	0.0%	86.7%	13.3%	0.0%	91.7%	0.0%	8.3%	83.3%	16.7%	0.0%	90.9%	9.1%	0.0%	83.3%	11.1%	5.6%	90.0%	10.0%	0.0%	
8	南前川病院	34	86.7%	13.3%	0.0%	86.7%	13.3%	0.0%	-	-	-	-	-	-	-	-	-	-	-	-	-	-	-	-	-	-	-	-	-	-	-	-	-	-	-	-	-	-	-	-	-	
9	汐田総合病院	58	84.3%	9.8%	6.0%	82.4%	0.0%	17.6%	81.0%	14.3%	4.8%	87.5%	4.2%	8.3%	65.0%	20.0%	15.0%	83.3%	11.1%	5.6%	94.7%	0.0%	5.3%	77.3%	18.2%	4.5%	90.5%	4.8%	4.8%	68.8%	25.0%	6.3%	84.2%	15.8%	0.0%	100.0%	0.0%	0.0%	95.5%	4.5%	0.0%	
10	豊原総合病院	47	88.7%	7.8%	3.4%	90.9%	9.1%	0.0%	100.0%	0.0%	0.0%	75.0%	16.7%	8.3%	78.6%	0.0%	21.4%	94.1%	5.9%	0.0%	93.3%	6.7%	0.0%	81.0%	14.3%	4.8%	100.0%	0.0%	0.0%	92.3%	7.7%	0.0%	62.5%	31.3%	6.3%	89.5%	5.3%	5.3%	100.0%	0.0%	0.0%	
11	総合大塚会病院	50	69.2%	16.7%	14.1%	80.0%	15.0%	5.0%	65.0%	10.0%	25.0%	80.0%	0.0%	20.0%	82.4%	11.8%	5.9%	68.2%	27.3%	4.3%	53.3%	26.7%	20.0%	60.0%	10.0%	30.0%	77.3%	9.1%	13.6%	73.1%	23.1%	3.8%	65.2%	13.0%	21.7%	53.8%	23.1%	23.1%	66.7%	28.6%	4.8%	
12	塚田総合病院	50	85.0%	6.5%	7.6%	75.9%	13.8%	10.3%	79.5%	5.1%	15.4%	86.8%	5.3%	7.9%	90.3%	3.2%	6.5%	97.2%	2.8%	0.0%	88.3%	5.9%	5.9%	84.8%	7.7%	7.7%	88.0%	0.0%	12.0%	93.1%	3.4%	3.4%	85.0%	5.0%	10.0%	79.2%	20.8%	0.0%	79.2%	8.3%	12.5%	
13	国際メディカル病院	45	85.0%	11.2%	3.0%	100.0%	0.0%	0.0%	82.6%	17.4%	0.0%	76.0%	24.0%	0.0%	72.0%	28.0%	0.0%	100.0%	0.0%	0.0%	73.1%	23.1%	3.8%	77.4%	12.9%	9.7%	84.0%	8.0%	8.0%	86.5%	10.8%	2.7%	95.8%	0.0%	4.2%	95.0%	2.5%	2.5%	0.0%	0.0%	0.0%	
14	大塚脳神経外科病院	31	84.6%	7.7%	7.7%	73.3%	6.7%	20.0%	85.7%	14.3%	0.0%	90.0%	10.0%	0.0%	100.0%	0.0%	0.0%	100.0%	0.0%	0.0%	100.0%	0.0%	0.0%	70.0%	20.0%	10.0%	50.0%	20.0%	30.0%	100.0%	0.0%	0.0%	100.0%	0.0%	0.0%	-	-	-	-	-	-	
15	尾崎中央病院	45	85.2%	11.9%	3.0%	84.0%	16.0%	0.0%	87.5%	12.5%	0.0%	76.5%	17.6%	5.9%	100.0%	0.0%	0.0%	85.7%	7.1%	7.1%	64.3%	21.4%	14.3%	73.7%	21.1%	5.3%	91.7%	8.3%	0.0%	82.4%	11.8%	5.9%	100.0%	0.0%	0.0%	87.5%	12.5%	0.0%	85.2%	14.8%	0.0%	
16	脳神経センター大田記念病院	50	88.4%	8.7%	2.9%	87.5%	0.0%	12.5%	87.5%	12.5%	0.0%	94.4%	5.6%	0.0%	73.3%	13.3%	13.3%	81.8%	18.2%	0.0%	87.5%	12.5%	0.0%	100.0%	0.0%	0.0%	86.7%	13.3%	0.0%	87.5%	6.3%	6.3%	93.3%	6.7%	0.0%	90.0%	0.0%	10.0%	87.5%	12.5%	0.0%	
17	井野川病院	49	92.9%	5.2%	1.9%	0.0%	0.0%	0.0%	100.0%	0.0%	0.0%	100.0%	0.0%	0.0%	90.0%	10.0%	0.0%	90.9%	9.1%	0.0%	94.4%	0.0%	5.6%	92.9%	7.1%	0.0%	86.7%	13.3%	0.0%	91.7%	4.2%	4.2%	94.4%	0.0%	5.6%	88.9%	11.1%	0.0%	100.0%	0.0%	0.0%	
18	HITO病院	50	86.5%	11.9%	1.6%	96.2%	3.8%	0.0%	88.2%	11.8%	0.0%	91.3%	8.7%	0.0%	92.9%	7.1%	0.0%	80.8%	19.2%	0.0%	87.0%	8.7%	4.3%	77.8%	16.7%	5.6%	72.7%	27.3%	0.0%	86.7%	10.0%	3.3%	94.4%	5.6%	0.0%	80.0%	20.0%	0.0%	90.0%	5.0%	5.0%	
19	茶臼水光会総合病院	49	78.2%	10.7%	11.1%	81.0%	9.5%	9.5%	72.0%	24.0%	4.0%	72.7%	13.6%	13.6%	90.9%	4.5%	4.5%	100.0%	0.0%	0.0%	88.5%	11.5%	0.0%	66.7%	9.5%	23.8%	80.0%	5.0%	15.0%	73.9%	8.7%	17.4%	73.9%	17.4%	8.7%	66.7%	9.5%	23.8%	76.2%	9.5%	14.3%	
20	那珂川病院	46	-	-	-	-	-	-	-	-	-	-	-	-	-	-	-	-	-	-	-	-	-	-	-	-	-	-	-	-	-	-	-	-	-	-	-	-	-			
21	熊本看護専門学校	131	81.3%	12.6%	6.0%	87.1%	9.7%	3.2%	82.0%	9.8%	8.2%	81.3%	12.5%	6.3%	84.2%	10.5%	5.3%	85.9%	7.8%	6.3%	77.2%	12.3%	10.5%	84.1%	12.7%	3.2%	82.4%	10.3%	7.4%	67.6%	25.0%	7.4%	79.6%	16.3%	4.1%	81.3%	17.2%	1.6%	83.6%	7.5%	9.0%	
22	熊本長井白リハビリテーション病院	94	84.5%	11.4%	4.1%	82.2%	11.1%	6.7%	88.0%	10.0%	2.0%	76.1%	21.7%	2.2%	87.0%	10.9%	2.2%	76.7%	14.0%	9.3%	86.4%	6.8%	6.8%	83.7%	12.2%	4.1%	92.7%	7.3%	0.0%	80.8%	17.3%	1.9%	90.0%	5.0%	84.4%	8.9%	6.7%	87.0%	9.3%	3.7%		
23	和国病院	42	75.4%	18.4%	6.1%	58.3%	33.3%	8.3%	87.5%	0.0%	12.5%	70.0%	20.0%	10.0%	72.7%	27.3%	0.0%	73.3%	13.3%	13.3%	75.0%	12.5%	12.5%	87.5%	12.5%	0.0%	70.0%	20.0%	10.0%	100.0%	0.0%	0.0%	60.0%	40.0%	0.0%	100.0%	0.0%	0.0%	81.8%	18.2%	0.0%	

ADLスコアの改善率(回復リハ)%(年度平均)



■ ADLスコアの改善率(療養)

No	病院名	主目的	病床数	2020年度			2020年4月			2020年5月			2020年6月			2020年7月			2020年8月			2020年9月			2020年10月			2020年11月			2020年12月			2021年1月			2021年2月			2021年3月				
				改善定例	維持定例	悪化定例	改善定例	維持定例	悪化定例	改善定例	維持定例	悪化定例	改善定例	維持定例	悪化定例	改善定例	維持定例	悪化定例	改善定例	維持定例	悪化定例	改善定例	維持定例	悪化定例	改善定例	維持定例	悪化定例	改善定例	維持定例	悪化定例	改善定例	維持定例	悪化定例	改善定例	維持定例	悪化定例	改善定例	維持定例	悪化定例					
1	同愛記念病院		30	33.3%	53.2%	13.5%	33.3%	66.7%	0.0%	42.9%	42.9%	14.3%	62.5%	37.5%	0.0%	40.0%	30.0%	30.0%	0.0%	60.0%	40.0%	50.0%	16.7%	33.3%	47.1%	47.1%	5.9%	16.7%	66.7%	16.7%	23.1%	69.2%	7.7%	44.4%	44.4%	11.1%	8.3%	75.0%	16.7%	0.0%	0.0%	0.0%		
2	尼崎中央病院		48	20.7%	65.5%	13.8%	50.0%	0.0%	50.0%	50.0%	0.0%	50.0%	50.0%	0.0%	0.0%	100.0%	0.0%	0.0%	0.0%	0.0%	0.0%	0.0%	66.7%	33.3%	50.0%	50.0%	0.0%	0.0%	66.7%	33.3%	0.0%	66.7%	33.3%	0.0%	0.0%	0.0%	0.0%	100.0%	0.0%	20.0%	80.0%	0.0%		
3	真星病院		90	26.9%	46.2%	26.9%	50.0%	50.0%	0.0%	0.0%	100.0%	0.0%	50.0%	0.0%	50.0%	0.0%	50.0%	0.0%	50.0%	0.0%	50.0%	25.0%	50.0%	25.0%	0.0%	100.0%	0.0%	100.0%	0.0%	0.0%	50.0%	25.0%	25.0%	0.0%	0.0%	0.0%	50.0%	0.0%	50.0%	0.0%	75.0%	25.0%	0.0%	
4	井野口病院		42	25.0%	68.8%	6.3%	0.0%	0.0%	0.0%	0.0%	0.0%	0.0%	100.0%	0.0%	0.0%	100.0%	0.0%	0.0%	0.0%	100.0%	0.0%	100.0%	0.0%	0.0%	0.0%	50.0%	50.0%	0.0%	100.0%	0.0%	0.0%	100.0%	0.0%	0.0%	100.0%	0.0%	100.0%	0.0%	50.0%	50.0%	0.0%			
5	金光病院		47	11.1%	66.7%	22.2%	0.0%	100.0%	0.0%	0.0%	0.0%	50.0%	50.0%	0.0%	100.0%	0.0%	0.0%	0.0%	100.0%	0.0%	0.0%	0.0%	0.0%	0.0%	0.0%	0.0%	0.0%	0.0%	50.0%	50.0%	100.0%	0.0%	0.0%	-	-	-	-	-	-	-	-			
6	西原病院		50	16.7%	66.7%	16.7%	0.0%	0.0%	100.0%	50.0%	50.0%	0.0%	50.0%	50.0%	0.0%	50.0%	0.0%	0.0%	0.0%	0.0%	0.0%	0.0%	100.0%	0.0%	0.0%	0.0%	0.0%	0.0%	100.0%	0.0%	0.0%	100.0%	0.0%	0.0%	0.0%	0.0%	0.0%	0.0%	0.0%	0.0%	0.0%	0.0%		
7	帯広中央病院		46	40.0%	46.7%	13.3%	0.0%	0.0%	0.0%	0.0%	0.0%	0.0%	50.0%	50.0%	0.0%	25.0%	50.0%	25.0%	0.0%	0.0%	100.0%	100.0%	0.0%	0.0%	0.0%	0.0%	33.3%	66.7%	0.0%	0.0%	0.0%	0.0%	100.0%	0.0%	0.0%	0.0%	0.0%	0.0%	0.0%	0.0%	100.0%	0.0%	100.0%	0.0%
8	済生会病院		93	44.4%	22.2%	33.3%	0.0%	100.0%	0.0%	0.0%	0.0%	0.0%	0.0%	0.0%	0.0%	100.0%	0.0%	0.0%	0.0%	0.0%	100.0%	33.3%	33.3%	33.3%	100.0%	0.0%	0.0%	0.0%	0.0%	0.0%	0.0%	0.0%	0.0%	0.0%	0.0%	0.0%	0.0%	0.0%	0.0%	0.0%	0.0%	0.0%	100.0%	
9	志村大宮病院		48	0.0%	100.0%	0.0%	0.0%	0.0%	0.0%	0.0%	0.0%	100.0%	0.0%	0.0%	100.0%	0.0%	0.0%	0.0%	0.0%	0.0%	0.0%	0.0%	0.0%	0.0%	0.0%	0.0%	0.0%	0.0%	0.0%	0.0%	0.0%	0.0%	0.0%	0.0%	0.0%	0.0%	0.0%	0.0%	0.0%	0.0%	0.0%	0.0%		
10	行田総合病院		54	2.1%	97.9%	0.0%	0.0%	100.0%	0.0%	0.0%	100.0%	0.0%	0.0%	100.0%	0.0%	0.0%	0.0%	0.0%	0.0%	0.0%	0.0%	0.0%	0.0%	0.0%	0.0%	0.0%	0.0%	0.0%	100.0%	0.0%	0.0%	100.0%	0.0%	0.0%	0.0%	0.0%	0.0%	0.0%	0.0%	0.0%	0.0%	0.0%		
11	和田病院		40	25.0%	50.0%	25.0%	0.0%	66.7%	33.3%	0.0%	0.0%	100.0%	0.0%	100.0%	0.0%	100.0%	0.0%	0.0%	0.0%	0.0%	0.0%	0.0%	0.0%	0.0%	0.0%	0.0%	66.7%	0.0%	33.3%	0.0%	0.0%	0.0%	0.0%	0.0%	0.0%	0.0%	100.0%	0.0%	50.0%	0.0%	50.0%	0.0%		
12	新小倉病院		41	0.0%	0.0%	0.0%	0.0%	0.0%	0.0%	0.0%	0.0%	0.0%	0.0%	0.0%	0.0%	0.0%	0.0%	0.0%	0.0%	0.0%	0.0%	0.0%	0.0%	0.0%	0.0%	0.0%	0.0%	0.0%	0.0%	0.0%	0.0%	0.0%	0.0%	0.0%	0.0%	0.0%	0.0%	0.0%	0.0%	0.0%	0.0%			
13	大分記念病院		34	64.3%	28.6%	7.1%	0.0%	100.0%	0.0%	100.0%	0.0%	0.0%	100.0%	0.0%	0.0%	0.0%	0.0%	0.0%	0.0%	0.0%	0.0%	0.0%	0.0%	0.0%	0.0%	0.0%	0.0%	0.0%	0.0%	0.0%	0.0%	0.0%	0.0%	0.0%	0.0%	0.0%	0.0%	0.0%	0.0%	0.0%	0.0%	0.0%		

ADLスコアの改善率(療養)(%) (年度平均)

