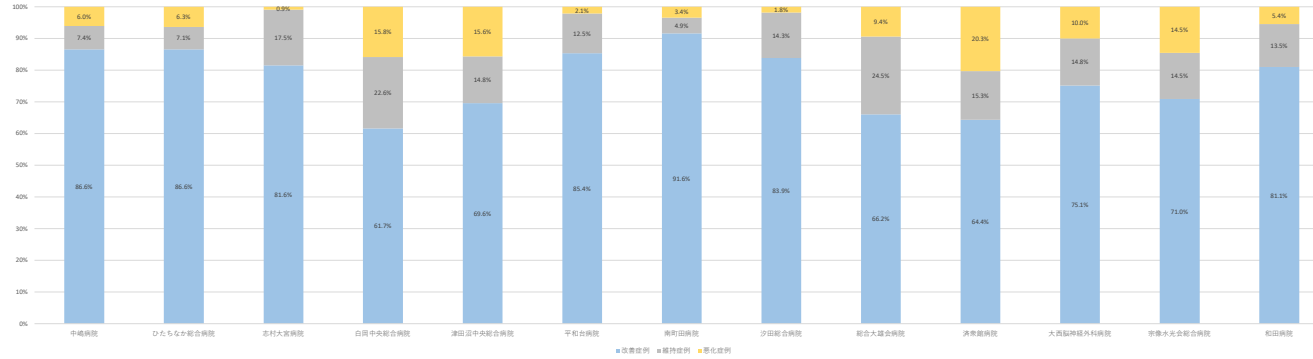


■ ADLスコアの改善率(回復リハ)

No	病院名	病床数	2022年度			2023年4月			2023年5月			2023年6月			2023年7月			2023年8月			2023年9月			2023年10月			2023年11月			2023年12月			2024年1月			2024年2月			2024年3月			
			改善率	維持率	悪化率	改善率	維持率	悪化率	改善率	維持率	悪化率	改善率	維持率	悪化率	改善率	維持率	悪化率	改善率	維持率	悪化率	改善率	維持率	悪化率	改善率	維持率	悪化率	改善率	維持率	悪化率	改善率	維持率	悪化率	改善率	維持率	悪化率							
1	中嶋病院	50	86.6%	7.4%	6.0%	85.0%	5.0%	10.0%	93.3%	2.2%	4.4%	85.3%	14.7%	0.0%	79.1%	9.3%	11.6%	79.5%	15.4%	5.1%	80.0%	7.5%	12.5%	97.7%	0.0%	2.3%	83.3%	11.1%	5.6%	88.1%	7.1%	4.8%	85.7%	9.5%	4.8%	90.0%	5.0%	5.0%	90.2%	4.9%	4.9%	
2	ひたちなか総合病院	50	86.6%	7.1%	6.3%	76.9%	23.1%	0.0%	100.0%	0.0%	0.0%	95.0%	5.0%	0.0%	87.0%	4.3%	8.7%	100.0%	0.0%	0.0%	91.7%	0.0%	8.3%	81.8%	9.1%	9.1%	66.7%	14.3%	19.0%	70.8%	16.7%	12.5%	78.6%	7.1%	14.3%	89.5%	10.5%	0.0%	100.0%	0.0%	0.0%	
3	志村大宮病院	50	81.6%	17.5%	0.9%	80.0%	20.0%	0.0%	83.3%	16.7%	0.0%	88.9%	11.1%	0.0%	52.4%	47.6%	0.0%	70.6%	29.4%	0.0%	95.2%	4.8%	0.0%	84.6%	15.4%	0.0%	82.6%	13.0%	4.3%	91.3%	8.3%	0.0%	80.0%	13.3%	6.7%	88.2%	11.8%	0.0%	83.3%	16.7%	0.0%	
4	白岡中央総合病院	41	61.7%	22.6%	15.8%	69.2%	30.8%	0.0%	40.0%	20.0%	40.0%	66.7%	22.2%	11.1%	56.3%	18.8%	25.0%	60.0%	20.0%	20.0%	50.0%	50.0%	0.0%	-	-	-	50.0%	28.6%	21.4%	77.8%	0.0%	22.2%	80.0%	10.0%	10.0%	61.5%	23.1%	15.4%	80.0%	13.3%	6.7%	
5	津田沼中央総合病院	108	69.6%	14.8%	15.6%	70.7%	9.8%	19.5%	78.3%	8.7%	13.0%	66.0%	16.0%	18.0%	69.4%	8.3%	22.2%	71.4%	18.4%	10.2%	51.2%	27.9%	20.9%	67.4%	16.3%	16.3%	76.6%	8.5%	14.9%	75.6%	9.8%	14.6%	66.7%	25.0%	8.3%	75.6%	9.8%	14.6%	66.7%	18.3%	15.0%	
6	平和台病院	40	85.4%	12.5%	2.1%	90.9%	9.1%	0.0%	77.8%	22.2%	0.0%	100.0%	0.0%	0.0%	71.4%	21.4%	7.1%	87.5%	12.5%	0.0%	88.9%	11.1%	0.0%	83.3%	8.3%	8.3%	88.9%	11.1%	0.0%	85.7%	14.3%	0.0%	-	-	-	-	-	-	-	-	-	
7	津町病院	34	91.6%	4.9%	3.4%	91.7%	0.0%	8.3%	95.8%	4.2%	0.0%	100.0%	0.0%	0.0%	95.2%	4.8%	0.0%	76.3%	17.6%	5.9%	85.7%	7.1%	7.1%	94.1%	5.9%	0.0%	90.9%	10.0%	0.0%	77.8%	5.6%	16.7%	100.0%	0.0%	0.0%	100.0%	0.0%	0.0%	93.8%	0.0%	6.3%	
8	汐田総合病院	58	83.9%	14.3%	1.8%	76.5%	17.6%	5.9%	100.0%	0.0%	0.0%	82.4%	17.6%	0.0%	81.8%	18.2%	0.0%	-	-	-	-	-	-	-	-	-	-	-	-	-	-	-	-	-	-	-	-	-	-	-	-	-
9	総合大宮病院	50	66.2%	24.5%	9.4%	66.7%	20.0%	13.3%	50.0%	42.9%	7.1%	80.0%	13.3%	6.7%	61.5%	30.8%	7.7%	58.3%	33.3%	8.3%	66.7%	22.2%	11.1%	85.7%	0.0%	14.3%	60.0%	30.0%	10.0%	60.0%	40.0%	0.0%	44.4%	33.3%	22.2%	84.6%	0.0%	15.4%	75.0%	25.0%	0.0%	
10	清泉病院	50	64.4%	15.3%	20.3%	61.9%	9.5%	28.6%	40.9%	31.8%	27.3%	66.7%	9.5%	23.8%	56.5%	17.4%	26.1%	73.7%	15.8%	10.5%	76.2%	14.3%	9.5%	68.2%	18.2%	13.6%	63.2%	5.3%	31.6%	57.1%	14.3%	28.6%	65.2%	21.7%	13.0%	70.6%	11.8%	17.6%	76.0%	12.0%	12.0%	
11	大宮脳神経外科病院	50	75.1%	14.8%	10.0%	70.6%	17.6%	11.8%	78.3%	21.7%	0.0%	86.7%	0.0%	13.3%	72.7%	13.6%	13.6%	71.4%	21.4%	7.1%	70.6%	23.3%	5.9%	84.6%	7.7%	7.7%	83.3%	5.6%	11.1%	58.3%	33.3%	8.3%	76.3%	0.0%	23.3%	78.6%	14.3%	7.1%	80.0%	6.7%	13.3%	
12	京橋水光会総合病院	49	71.0%	14.5%	14.5%	65.0%	20.0%	15.0%	55.6%	16.7%	27.8%	76.5%	17.6%	5.9%	92.9%	0.0%	7.1%	-	-	-	-	-	-	-	-	-	-	-	-	-	-	-	-	-	-	-	-	-	-	-	-	-
13	和国病院	42	81.1%	13.5%	5.4%	71.4%	28.6%	0.0%	90.0%	10.0%	0.0%	75.0%	12.5%	12.5%	77.8%	22.2%	0.0%	85.7%	0.0%	14.3%	100.0%	0.0%	0.0%	71.4%	28.6%	0.0%	88.9%	11.1%	0.0%	70.0%	10.0%	20.0%	70.0%	30.0%	0.0%	81.8%	9.1%	9.1%	83.3%	8.3%	8.3%	

ADLスコアの改善率(回復リハ)(%)(年度平均)



■ ADLスコアの改善率(地域包括ケア)

No	施設名	病床数	2022年度			2023年4月			2023年5月			2023年6月			2023年7月			2023年8月			2023年9月			2023年10月			2023年11月			2023年12月			2024年1月			2024年2月			2024年3月				
			改善率例	維持率例	悪化率例	改善率例	維持率例	悪化率例	改善率例	維持率例	悪化率例	改善率例	維持率例	悪化率例	改善率例	維持率例	悪化率例	改善率例	維持率例	悪化率例	改善率例	維持率例	悪化率例	改善率例	維持率例	悪化率例	改善率例	維持率例	悪化率例	改善率例	維持率例	悪化率例	改善率例	維持率例	悪化率例								
1	西園病院	12	13.4%	83.5%	3.1%	0.0%	0.0%	0.0%	0.0%	100.0%	0.0%	0.0%	100.0%	0.0%	50.0%	50.0%	0.0%	50.0%	50.0%	0.0%	25.0%	50.0%	25.0%	22.2%	77.8%	0.0%	8.3%	91.7%	0.0%	11.8%	88.2%	0.0%	5.9%	82.4%	11.8%	15.4%	84.6%	0.0%	11.1%	88.9%	0.0%		
2	東京中央病院	47	16.1%	77.7%	6.2%	13.3%	81.3%	5.3%	8.9%	80.4%	10.7%	18.0%	73.8%	8.2%	11.7%	85.0%	3.3%	16.2%	75.7%	8.1%	21.1%	73.7%	5.3%	14.8%	75.4%	9.8%	13.6%	81.4%	5.1%	23.1%	66.7%	10.3%	22.4%	73.3%	4.1%	17.5%	82.5%	0.0%	16.7%	78.3%	5.0%		
3	徳島市立第一病院	49	10.0%	77.2%	12.0%	20.7%	73.9%	5.4%	9.5%	78.6%	11.9%	9.6%	72.3%	18.1%	11.5%	77.0%	11.5%	17.8%	75.6%	6.7%	7.8%	81.1%	11.1%	6.6%	76.9%	16.5%	13.3%	72.3%	14.5%	7.0%	83.5%	9.6%	7.6%	81.5%	10.5%	14.1%	78.8%	10.1%	5.8%	76.0%	18.3%		
4	志村入雲病院	12	0.5%	96.9%	2.6%	0.0%	100.0%	0.0%	0.0%	100.0%	0.0%	5.0%	95.0%	0.0%	0.0%	87.5%	12.5%	0.0%	94.1%	5.9%	0.0%	100.0%	0.0%	0.0%	100.0%	0.0%	0.0%	100.0%	0.0%	0.0%	100.0%	0.0%	0.0%	94.1%	5.9%	0.0%	88.9%	11.1%	0.0%	100.0%	0.0%		
5	白岡中央総合病院	14	9.3%	89.2%	1.5%	4.3%	95.7%	0.0%	8.0%	88.0%	4.0%	8.0%	92.0%	0.0%	0.0%	100.0%	0.0%	9.1%	90.9%	0.0%	4.5%	95.5%	0.0%	-	-	-	5.9%	91.2%	2.9%	26.5%	73.5%	0.0%	8.8%	88.2%	2.9%	11.4%	85.7%	2.9%	13.3%	83.3%	3.3%		
6	平和社病院	40	42.4%	51.1%	6.5%	42.9%	45.2%	11.9%	34.4%	56.3%	9.4%	32.3%	61.3%	6.5%	37.7%	42.3%	0.0%	41.5%	53.7%	4.9%	34.1%	54.5%	11.4%	55.6%	41.7%	2.8%	38.2%	61.8%	0.0%	48.6%	42.9%	8.6%	-	-	-	-	-	-	-	-	-		
7	川崎総合病院	104	43.7%	50.3%	6.1%	43.4%	50.6%	6.0%	48.9%	44.7%	6.4%	42.1%	52.3%	5.6%	40.4%	53.2%	6.4%	-	-	-	-	-	-	-	-	-	-	-	-	-	-	-	-	-	-	-	-	-	-	-	-	-	-
8	聖隷湘南病院	38	40.2%	48.3%	11.5%	33.3%	41.7%	25.0%	28.6%	66.7%	4.8%	32.0%	48.0%	20.0%	34.4%	59.4%	6.3%	54.2%	29.2%	16.7%	43.3%	43.3%	13.3%	37.8%	54.1%	8.1%	51.7%	37.9%	10.3%	46.4%	46.4%	7.1%	30.8%	61.5%	7.7%	45.2%	38.7%	16.1%	39.3%	50.0%	10.7%		
9	戸塚立川第2病院	4	40.2%	54.6%	5.2%	20.0%	80.0%	0.0%	25.0%	75.0%	0.0%	50.0%	50.0%	0.0%	33.3%	55.6%	11.1%	42.9%	57.1%	0.0%	0.0%	100.0%	0.0%	77.8%	22.2%	0.0%	12.5%	75.0%	12.5%	40.0%	60.0%	0.0%	66.7%	16.7%	16.7%	50.0%	50.0%	0.0%	41.7%	50.0%	8.3%		
10	豊島中央病院	60	28.8%	66.1%	5.1%	26.4%	67.4%	6.2%	31.0%	61.2%	7.8%	27.4%	70.4%	2.2%	30.3%	65.6%	4.1%	35.0%	61.3%	3.6%	25.6%	69.4%	5.0%	24.8%	68.1%	7.1%	-	-	-	-	-	-	-	-	-	-	-	-	-	-	-	-	
11	諏訪中央病院	24	52.6%	40.2%	7.2%	61.3%	25.8%	12.9%	60.6%	27.3%	12.1%	37.1%	57.1%	5.7%	56.7%	36.7%	6.7%	40.8%	53.1%	6.3%	63.6%	30.3%	6.1%	52.8%	44.4%	2.8%	53.8%	40.4%	5.8%	52.5%	40.0%	7.5%	50.0%	44.4%	5.6%	59.0%	30.8%	10.3%	45.3%	47.8%	6.5%		
12	真光病院	60	21.5%	68.1%	10.4%	20.0%	74.3%	5.7%	29.9%	58.2%	11.9%	24.2%	67.7%	8.1%	19.7%	73.8%	6.6%	14.3%	69.6%	16.1%	23.7%	68.4%	7.9%	25.3%	60.0%	14.7%	23.6%	73.6%	2.8%	18.0%	67.4%	14.6%	21.0%	62.9%	16.1%	20.5%	70.5%	9.0%	18.3%	70.7%	11.0%		
13	真光病院	26	30.9%	63.0%	6.1%	29.0%	67.7%	3.2%	39.4%	54.5%	6.1%	32.7%	61.2%	6.1%	30.0%	70.0%	0.0%	30.6%	55.6%	13.9%	28.0%	68.0%	4.0%	25.0%	70.0%	5.0%	23.7%	63.2%	13.2%	33.3%	60.6%	6.1%	26.8%	70.7%	2.4%	42.9%	57.1%	0.0%	37.8%	53.3%	8.9%		
14	光生病院	34	-	-	-	-	-	-	-	-	-	-	-	-	-	-	-	-	-	-	-	-	-	-	-	-	-	-	-	-	-	-	-	-	-	-	-	-	-	-	-	-	
15	金光病院	50	46.8%	35.5%	17.7%	38.5%	23.1%	38.5%	100.0%	0.0%	0.0%	0.0%	0.0%	0.0%	0.0%	0.0%	0.0%	0.0%	0.0%	0.0%	51.1%	31.9%	17.0%	34.8%	52.2%	13.0%	47.7%	38.6%	13.6%	48.8%	36.6%	14.6%	53.5%	37.2%	9.3%	47.9%	29.2%	22.9%	42.9%	28.6%	28.6%		
16	宮崎県立総合医療センター	39	13.6%	82.1%	4.1%	10.9%	89.1%	0.0%	17.3%	82.7%	2.8%	12.5%	81.3%	6.3%	14.9%	74.5%	10.6%	-	-	-	-	-	-	-	-	-	-	-	-	-	-	-	-	-	-	-	-	-	-	-	-	-	-
17	徳島赤十字病院	50	61.6%	34.1%	4.3%	59.4%	39.1%	1.6%	54.9%	42.3%	2.8%	65.3%	29.2%	5.6%	65.2%	30.3%	4.5%	60.3%	34.9%	4.8%	65.0%	28.3%	6.7%	-	-	-	-	-	-	-	-	-	-	-	-	-	-	-	-	-	-	-	
18	井上病院	12	34.8%	61.0%	4.2%	20.0%	80.0%	0.0%	23.5%	64.7%	11.8%	37.5%	62.5%	0.0%	31.3%	65.6%	3.1%	47.4%	42.1%	10.5%	50.0%	50.0%	0.0%	41.7%	50.0%	8.3%	32.1%	64.3%	3.6%	40.0%	56.0%	4.0%	56.7%	43.3%	0.0%	33.3%	60.6%	6.1%	10.0%	86.7%	3.3%		
19	川崎中央病院	30	0.0%	0.0%	0.0%	0.0%	0.0%	0.0%	0.0%	0.0%	0.0%	0.0%	0.0%	0.0%	0.0%	0.0%	0.0%	0.0%	0.0%	0.0%	0.0%	0.0%	0.0%	0.0%	0.0%	0.0%	0.0%	0.0%	0.0%	0.0%	0.0%	0.0%	0.0%	0.0%	0.0%	0.0%	0.0%	0.0%	0.0%	0.0%	0.0%	0.0%	
20	大分記念病院	35	42.0%	53.8%	4.2%	43.2%	52.3%	4.5%	35.7%	60.7%	3.6%	31.9%	66.0%	2.1%	37.1%	54.3%	8.6%	35.5%	54.8%	9.7%	35.6%	60.0%	4.4%	38.9%	52.8%	8.3%	37.9%	62.1%	0.0%	42.1%	52.6%	5.3%	65.5%	34.5%	0.0%	48.6%	51.4%	0.0%	60.0%	36.7%	3.3%		
21	和紅病院	30	36.7%	42.7%	20.6%	38.1%	38.1%	23.8%	38.1%	38.1%	23.8%	16.7%	66.7%	16.7%	33.3%	50.0%	16.7%	36.4%	40.9%	22.7%	34.8%	47.8%	17.4%	47.6%	23.8%	28.6%	42.3%	38.5%	19.2%	31.6%	15.8%	52.6%	27.8%	55.6%	16.7%	33.3%	52.4%	14.3%	63.0%	33.3%	3.7%		

ADLスコアの改善率(地域包括ケア)(%)(年度平均)

